

Decoflood MVF606

MVF606 CDM-T150W/830 K 240V I WB GR SP



Decoflood is a family of seven high performance floodlights, offering aesthetically pleasing yet surprisingly rugged luminaire designs. An extensive range of lamps provides a choice of colour appearance and colour rendering, while twenty different optics offer a wide selection of beam spread patterns. Even more options are available, with further choices of refractive glass plates and stylish louvres.

Product data

• Product Data

Order code	677156 00
Full product code	871155967715600
Full product name	MVF606 CDM-T150W/830 K 240V I WB GR SP
Order product name	MVF606 CDM-T150W/830 K 240V I WB GR SP
Pieces per pack	1
Packs per outerbox	1
Bar code on pack - EAN1	8711559677156
Bar code on outerbox - EAN3	8711559677156
Logistic code(s) - 12NC	910502171718
Net weight per piece	7.110 kg

• General information

Product family code	MVF606 [MVF606]
Lamp family code	CDM-T [MASTER Colour CDM-T]

Lamp power	150 W
Lamp color code	830 [830 Warm white]
Kombipack	K [Lamp included]
Compensation circuit	No [-]
Gear	CONV [Conventional]
Safety class	I [Safety class I]
IP code	IP65 [Dust penetration protected, jet-proof]
IK code	IK08 [5 J Vandal-protected]
Optic	WB [Wide beam]
Color	GR [Grey]
Ignitor	SP [Semi-parallel]
European Community mark	CE [CE mark]
ENEC mark	ENEC [ENEC mark]

• Electrical

Supply voltage	240 V
----------------	-------

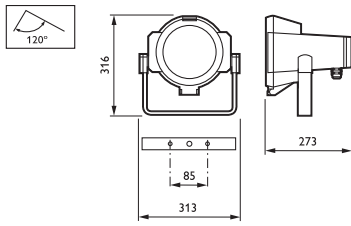


PHILIPS

sense and simplicity

Decoflood MVF606

Dimensional drawing



MVF606

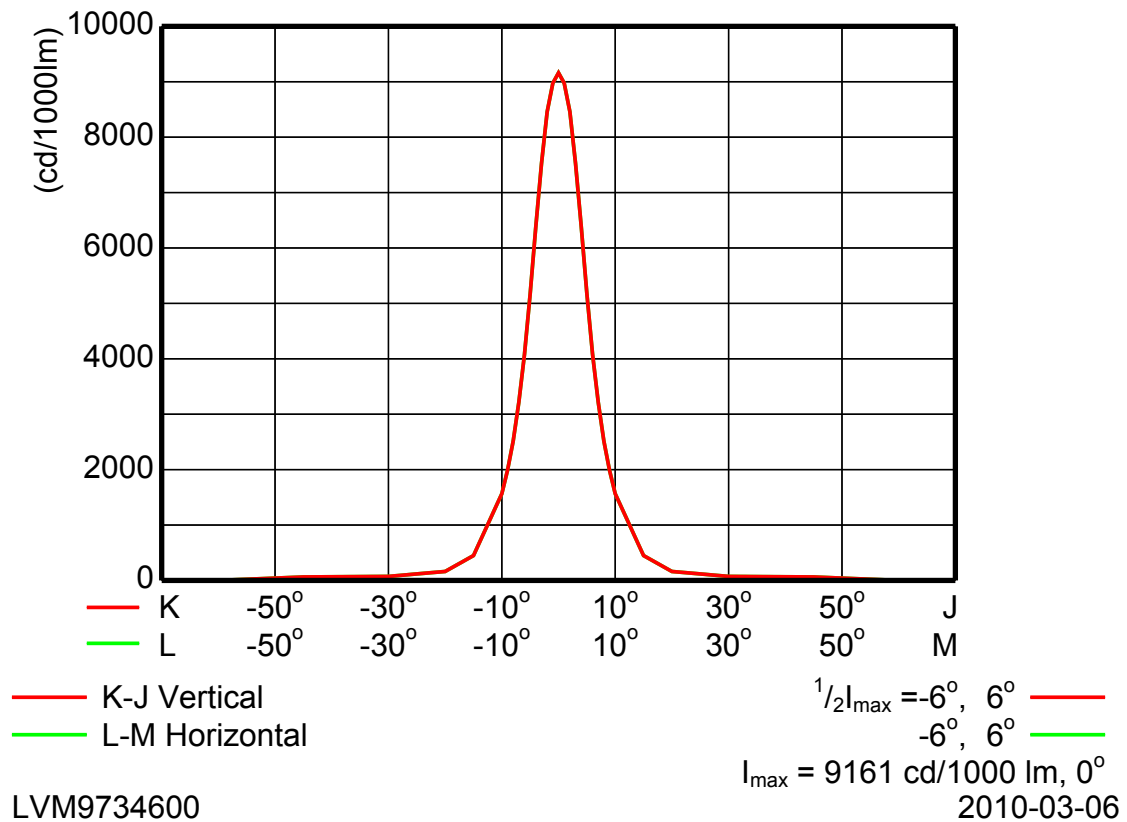
Photometric data

MVF606 Decoflood MVF606 1xCDM-T150W CONV WB

L.O.R.=0.70

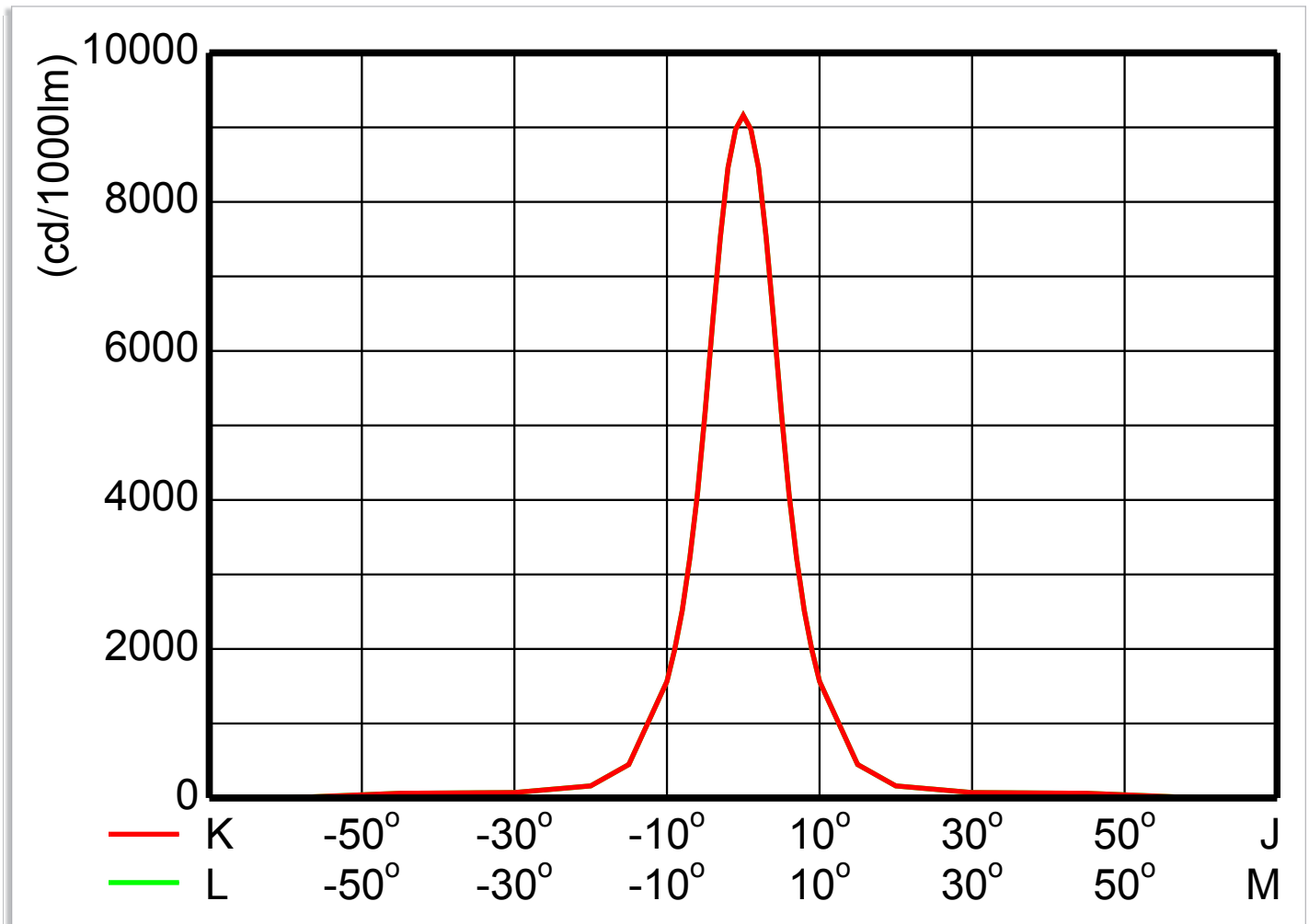
1 x 14000 lm

Cartesian Intensity Diagram



MVF606 1xCDM-T150W WB

Photometric data



MVF606 1xCDM-T150W WB



© 2010 Koninklijke Philips Electronics N.V.
All rights reserved.

Specifications are subject to change without notice. Trademarks are the property of Koninklijke Philips Electronics N.V. or their respective owners.

www.philips.com/lighting

2010, August 31
data subject to change